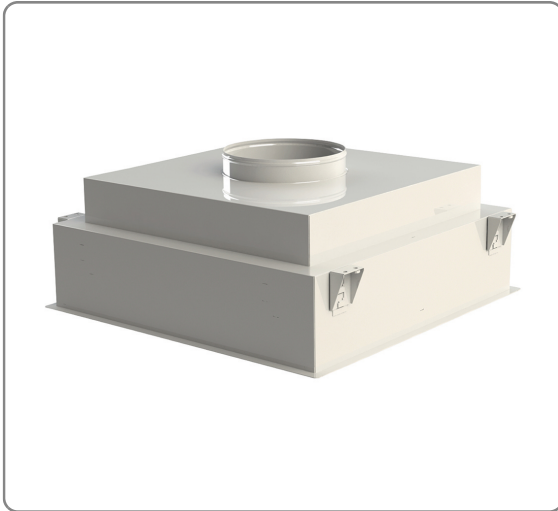


# CleanSeal top entry PU gasket: full equipment



## Advantages

- Tool-less filter clamping 100% secured and immediate
- Long lasting reliability and tightness: robust fully welded construction
- Large choice of standardized sizes
- Quick grid locking for immediate access to filter
- Easy installation: unique movable supporting blocks included
- Complete interchangeable diffusion plates range

**Application:** Turbulent airflow in clean rooms

**Type:** Terminal Filter Housing

**Construction:** Steel, fully welded seams

**Finishing:** White epoxy coated RAL 9010

**Connection:** By ribbed circular inlet continuous welded on top

**For Filters:** MEGALAM MD/MX/MD PU gasket frame height (66/90/110mm) (to be ordered separately)

**Filter Mounting:** Tool-less multi-height quick release lever clamp for immediate and secured clamping including gasket compression limiter and filter retainer

**Control equipment:** room side access : 1 port for dp or 100% measurement

**Housing installation:** by removable «universal blocks», for suspension by hangers, or integration into clean room ceiling panels or fitting into T bar grids system

**Diffusion plates (to be ordered separately):** Flush hinged grids with “credit card” quick locking: Perforated, swirl, 4 ways, adjustable blades

Type	Dimensions WxHxD (mm)	Filter size HxWxD (mm)	Con. Ø (mm)	Weight (kg)
CL-SW-3P3-P-XX-T-C160-N-00-AAA	392x338x392	610x305x110	160	6.7
CL-SW-4P4-P-XX-T-C200-N-00-AAA	544x338x544	457x457x110	200	10.1
CL-SW-4P4-P-XX-T-C250-N-00-AAA	544x338x544	457x457x110	250	10
CL-SW-5P5-P-XX-T-C250-N-00-AAA	595x338x595	508x508x110	250	11.3
CL-SW-5P5-P-XX-T-C315-N-00-AAA	595x338x595	508x508x110	315	11.1
CL-SW-6P6-P-XX-T-C250-N-00-AAA	697x338x697	610x610x110	250	14.1
CL-SW-6P6-P-XX-T-C315-N-00-AAA	697x338x697	610x610x110	315	13.9
CL-SW-11P5-P-XX-T-C315-N-00-AAA	1195x338x595	508x1108x110	315	19.1
CL-SW-12P6-P-XX-T-C315-N-00-AAA	1307x338x697	610x1220x110	315	22.7

*Dimension: including peripheral return of 20mm*

*Depth: including collar height of 46mm*

*Type: for ordering, replace XX, and select filter frame height:*

*MD for Megalam MD 66mm*

*MX for Megalam MX 90mm*

*MG for Megalam MG 110mm*